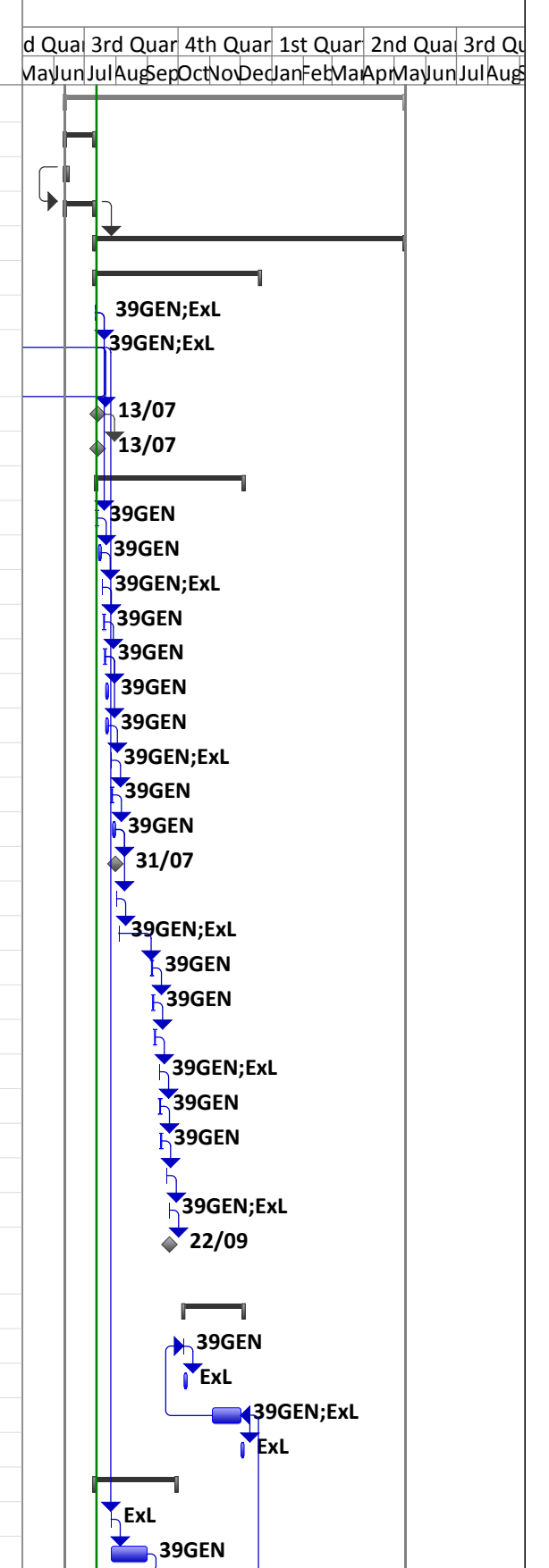
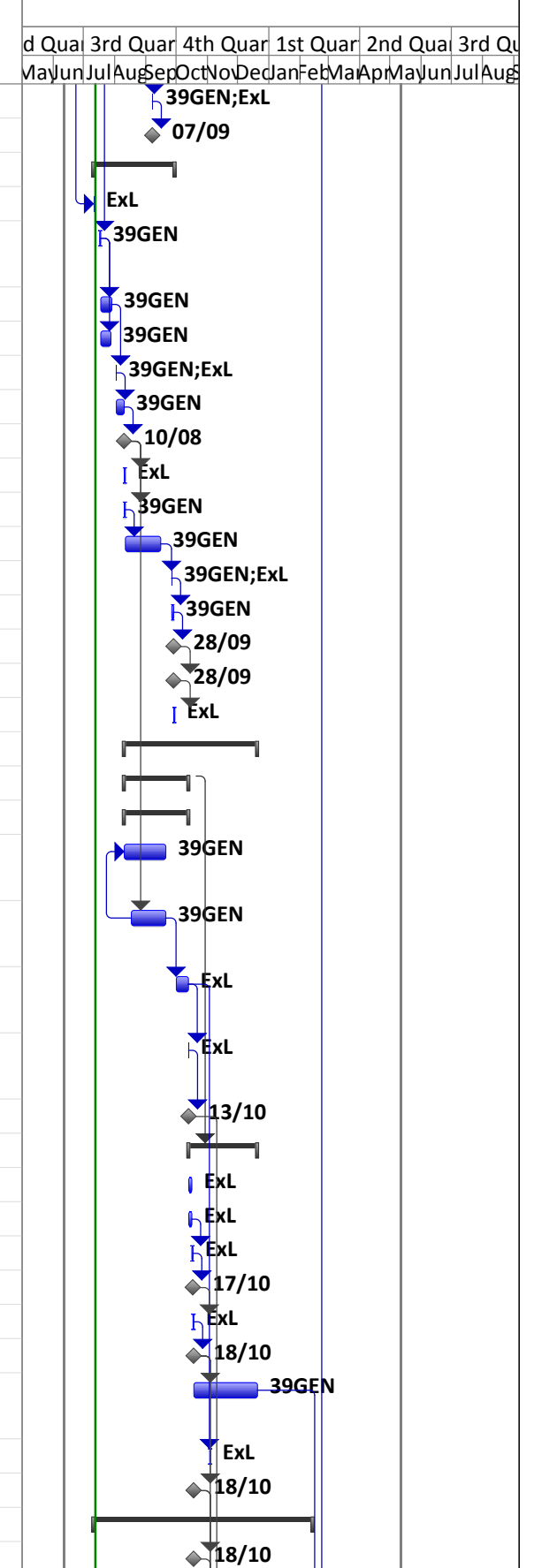


ID	% Complete	Task Name	Duration	Start	Finish	Predecessors	Successors	Resource Names	Timeline																
									d	Quar	3rd Quar	4th Quar	1st Quar	2nd Quar	3rd Quar	4th	1st	2nd	3rd	4th					
									May	Jun	Jul	Aug	Sep	Oct	Nov	Dec	Jan	Feb	Mar	Apr	May	Jun	Jul	Aug	
0	6%	Alma & Primo Implementation - Università di Genova	240,2 days	Mon 12/06/17	Fri 11/05/18																				
1	100%	Getting Ready	21 days	Mon 12/06/17	Mon 10/07/17																				
2	100%	Ex Libris Preparations	3 days	Mon 12/06/17	Wed 14/06/17		24SS																		
24	100%	Customer Preparations	21 days	Mon 12/06/17	Mon 10/07/17	2SS	34																		
34	0%	Alma Implementation	219,2 days	Tue 11/07/17	Fri 11/05/18	24																			
35	0%	Phase I - Define	117,2 days	Tue 11/07/17	Wed 20/12/17	33																			
36	100%	Kick off meeting On site	0,5 days	Tue 11/07/17	Tue 11/07/17		37FS+1 day;41FS+1	39GEN;ExL																	
37	100%	Migrarion and Configuration Overview	0,5 days	Wed 12/07/17	Wed 12/07/17	36FS+1 day	69FS+10 days;74SS-7	39GEN;ExL																	
38	100%	Standard sandbox provisioned	0 days	Thu 13/07/17	Thu 13/07/17	37FS+1 day	39	ExL																	
39	100%	Access to the Alma Standard Training Sandbox granted	0 days	Thu 13/07/17	Thu 13/07/17	38		ExL																	
40	0%	Alma Training	103,7 days	Wed 12/07/17	Mon 04/12/17																				
41	0%	Training "Navigation and searching in Alma"	1 day	Wed 12/07/17	Thu 13/07/17	36FS+1 day	42FS+1 day	39GEN																	
42	0%	Provide questions for follow-up call	1 day	Fri 14/07/17	Mon 17/07/17	41FS+1 day	43FS+1 day	39GEN																	
43	0%	Follow-up functional call - Topic: "Navigation and searching in Alma"	1 hr	Tue 18/07/17	Tue 18/07/17	42FS+1 day	44FS+1 day	39GEN;ExL																	
44	0%	Training "User Management"	1 day	Wed 19/07/17	Thu 20/07/17	43FS+1 day	45	39GEN																	
45	0%	Administration Fundamentals > Introduction	1 day	Thu 20/07/17	Fri 21/07/17	44	46;47	39GEN																	
46	0%	Administration Fundamentals > User Management	1 day	Fri 21/07/17	Mon 24/07/17	45		39GEN																	
47	0%	Provide questions for follow-up call	0,5 days	Fri 21/07/17	Mon 24/07/17	45	48FS+3 days	39GEN																	
48	0%	Follow-up functional call - Topic: "User Management"	1 hr	Thu 27/07/17	Thu 27/07/17	47FS+3 days	49	39GEN;ExL																	
49	0%	Training "Fulfillment"	1 day	Thu 27/07/17	Fri 28/07/17	48	50	39GEN																	
50	0%	Administration Fundamentals > Fulfillment	1 day	Fri 28/07/17	Mon 31/07/17	49	52FS+1 day;51	39GEN																	
51	0%	Open access to Sandbox configuration	0 days	Mon 31/07/17	Mon 31/07/17	50		ExL																	
52	0%	Provide questions for follow-up call	0,5 days	Tue 01/08/17	Tue 01/08/17	50FS+1 day	53FS+2 days																		
53	0%	Follow-up functional call - Topic: "Fulfillment"	1 hr	Thu 03/08/17	Thu 03/08/17	52FS+2 days	54FS+22 days	39GEN;ExL																	
54	0%	Training "Acquisitions"	1,1 days	Mon 04/09/17	Tue 05/09/17	53FS+22 days	55	39GEN																	
55	0%	Administration Fundamentals > Acquisitions	1 day	Tue 05/09/17	Wed 06/09/17	54	56FS+1 day	39GEN																	
56	0%	Provide questions for follow-up call	0,5 days	Thu 07/09/17	Fri 08/09/17	55FS+1 day	57FS+2 days																		
57	0%	Follow-up functional call - Topic: "Acquisitions"	1 hr	Tue 12/09/17	Tue 12/09/17	56FS+2 days	58	39GEN;ExL																	
58	0%	Training "Resource Management"	1 day	Tue 12/09/17	Wed 13/09/17	57	59	39GEN																	
59	0%	Administration Fundamentals > Resource Management	1 day	Wed 13/09/17	Thu 14/09/17	58	60FS+3 days	39GEN																	
60	0%	Provide questions for follow-up call	0,5 days	Tue 19/09/17	Wed 20/09/17	59FS+3 days	61FS+2 days																		
61	0%	Follow-up functional call - Topic: "Resource Management"	1 hr	Fri 22/09/17	Fri 22/09/17	60FS+2 days	62	39GEN;ExL																	
62	0%	Alma Functional Training and Administration Fundamentals training completed	0 days	Fri 22/09/17	Fri 22/09/17	61																			
63	0%	Alma Certification Training Program	41 days	Fri 06/10/17	Mon 04/12/17																				
64	0%	Supply Ex Libris staff names for the training	0,5 days	Fri 06/10/17	Fri 06/10/17	66SS-1 mon?	65	39GEN																	
65	0%	Register staff for certification training program	1 day	Fri 06/10/17	Mon 09/10/17	64		ExL																	
66	0%	Alma Certification Training	20 days	Fri 03/11/17	Fri 01/12/17	167FF-2,6 mon;64SS-1 mon?;67		39GEN;ExL																	
67	0%	Confirmation of Certified Staff	1 day	Fri 01/12/17	Mon 04/12/17	66		ExL																	
68	0%	Customer Integration Preparations	58,38 days	Tue 11/07/17	Fri 29/09/17																				
69	0%	Send customer 3rd Party Integrations Form	1 hr	Thu 27/07/17	Thu 27/07/17	37FS+10 days	70	ExL																	
70	0%	Return 3rd Party Integrations form inputs	25 days	Thu 27/07/17	Thu 31/08/17	69	71FS+5 days	39GEN																	



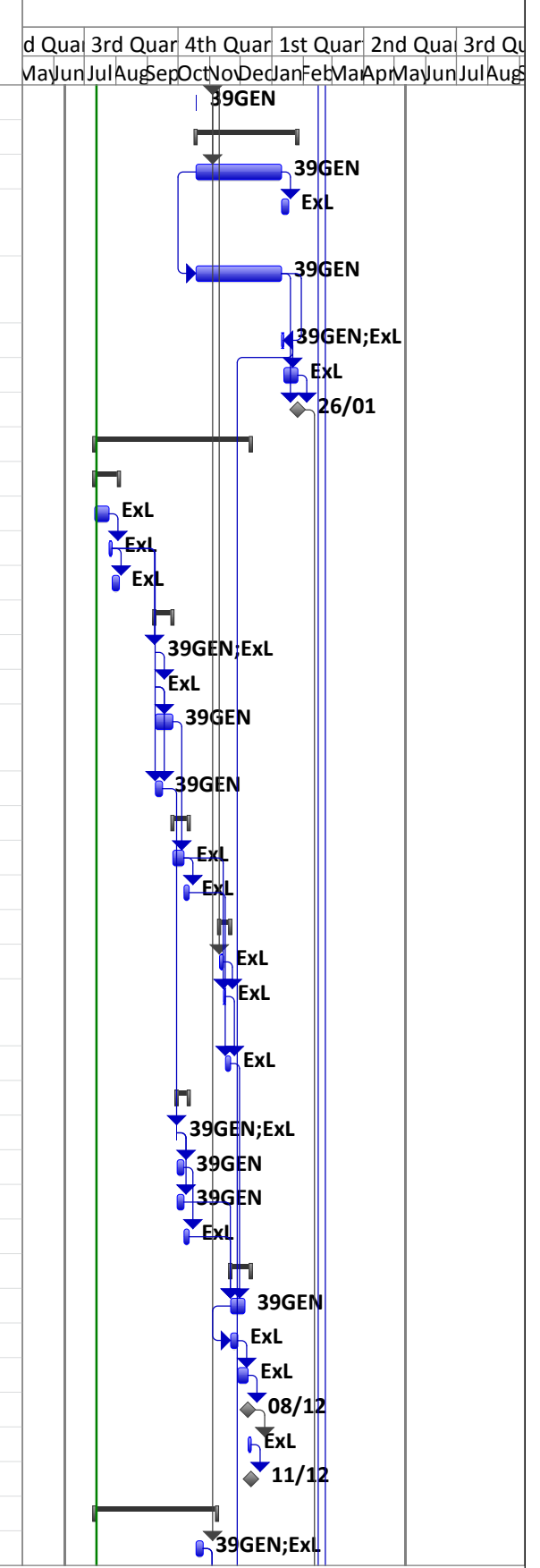
Project: Alma & Primo Implement Date: Thu 13/07/17	Task		Project Summary		Inactive Milestone		Manual Summary Rollup		Deadline	
	Split		External Tasks		Inactive Summary		Manual Summary		Progress	
	Milestone		External Milestone		Manual Task		Start-only		Manual Progress	
	Summary		Inactive Task		Duration-only		Finish-only			

ID	% Complete	Task Name	Duration	Start	Finish	Predecessors	Successors	Resource Names																		
									d	3rd Quar	4th Quar	1st Quar	2nd Quar	3rd Quar												
									May	Jun	Jul	Aug	Sep	Oct	Nov	Dec	Jan	Feb	Mar	Apr	May	Jun	Jul	Aug		
71	0%	3rd Party Integrations Form Initial Review Session	0,3 days	Thu 07/09/17	Thu 07/09/17	70FS+5 days	72	39GEN;ExL																		
72	0%	Integration Preparations Completed	0 days	Thu 07/09/17	Thu 07/09/17	71																				
73	0%	Customer Migration Test Load Preparations	58,38 days	Tue 11/07/17	Fri 29/09/17																					
74	0%	Send customer Configuration Form, Sample and Guide	1 hr	Tue 11/07/17	Tue 11/07/17	37SS-7 days		ExL																		
75	0%	For Aleph: Download and install AutoExtract tool and create Migration Form	1 day	Mon 17/07/17	Mon 17/07/17	37FS+2 days	76;77	39GEN																		
76	0%	Complete and Return Migration Form	9 days	Tue 18/07/17	Fri 28/07/17	75	78FS+2 days	39GEN																		
77	0%	Complete and Return P2E input file	8 days	Tue 18/07/17	Thu 27/07/17	75		39GEN																		
78	0%	"Migration Inputs Review" session	2 hrs	Wed 02/08/17	Wed 02/08/17	76FS+2 days	79	39GEN;ExL																		
79	0%	Adjust Migration inputs, if necessary	6 days	Wed 02/08/17	Thu 10/08/17	78	80	39GEN																		
80	0%	Customer Migration Test Load Preparations completed	0 days	Thu 10/08/17	Thu 10/08/17	79	81;82;93FS+5 days																			
81	0%	Ex Libris Migration Test Load Preparations	1 day	Thu 10/08/17	Fri 11/08/17	80		ExL																		
82	0%	Populate Configuration Form from Migration Form	1 day	Thu 10/08/17	Fri 11/08/17	80	83	39GEN																		
83	0%	Return draft configuration form inputs	25 days	Fri 11/08/17	Fri 15/09/17	82	84FS+7 days	39GEN																		
84	0%	"Configuration Form Review" session	1 hr	Tue 26/09/17	Tue 26/09/17	83FS+7 days	85	39GEN;ExL																		
85	0%	Adjust Configuration Form inputs	2 days	Tue 26/09/17	Thu 28/09/17	84	86	39GEN																		
86	0%	Configuration Form Finalize	0 days	Thu 28/09/17	Thu 28/09/17	85	87																			
87	0%	Customer Configuration and Integration Preparations Completed	0 days	Thu 28/09/17	Thu 28/09/17	86	88																			
88	0%	Ex Libris Migration Test Load Preparations	1 day	Thu 28/09/17	Fri 29/09/17	87		ExL																		
89	0%	Production Environment Preparation	94,95 days	Thu 10/08/17	Wed 20/12/17																					
90	0%	Data Migration - Test Load	46,95 days	Thu 10/08/17	Fri 13/10/17		97																			
91	0%	Test Load Extract	46,95 days	Thu 10/08/17	Fri 13/10/17																					
92	0%	Aleph - Test AutoExtract/transform full data and upload to regional EXL FTP	29 days	Thu 10/08/17	Wed 20/09/17	93SS-1 wk?		39GEN																		
93	0%	SFX - AutoExtract/transform full data and upload to regional EXL FTP	24 days	Thu 17/08/17	Wed 20/09/17	80FS+5 days	92SS-1 wk?;94FS+4 days	39GEN																		
94	0%	Test load (full data) incl. internal testing on migration environment	10 days	Sun 01/10/17	Thu 12/10/17	93FS+4 days	95;105FS+3 wks?	ExL																		
95	0%	Copy institution from migration server to production environment along with migration statistics report	0,2 days	Fri 13/10/17	Fri 13/10/17	94	96	ExL																		
96	0%	Test Load Completed	0 days	Fri 13/10/17	Fri 13/10/17	95	131FS+4 wks																			
97	0%	Alma Initial Configuration	48 days	Fri 13/10/17	Wed 20/12/17	90																				
98	0%	Alma initial configuration on PROD environment	1 day	Fri 13/10/17	Mon 16/10/17			ExL																		
99	0%	End to end internal testing on PROD environment	1 day	Fri 13/10/17	Mon 16/10/17		100	ExL																		
100	0%	Verify Alma Analytics creation	1 day	Mon 16/10/17	Tue 17/10/17	99	101	ExL																		
101	0%	Alma Initial Configuration Completed	0 days	Tue 17/10/17	Tue 17/10/17	100	102																			
102	0%	Perform "Production Not Live" Procedure	1 day	Tue 17/10/17	Wed 18/10/17	101	103	ExL																		
103	0%	Production Environment Preparation Completed	0 days	Wed 18/10/17	Wed 18/10/17	102	106;104;147																			
104	0%	Check the list of source link resolver providers for new URL change post Go-Live	9 wks	Wed 18/10/17	Wed 20/12/17	103	171	39GEN																		
105	0%	Enable jobs scheduler	1 day	Fri 03/11/17	Fri 03/11/17	94FS+3 wks?		ExL																		
106	0%	Define Phase Completed	0 days	Wed 18/10/17	Wed 18/10/17	103	108;111																			
107	0%	Phase II - Build	156,2 days	Tue 11/07/17	Tue 13/02/18																					
108	0%	Customer access to Alma Production provided (email)	0 days	Wed 18/10/17	Wed 18/10/17	106	109	ExL																		



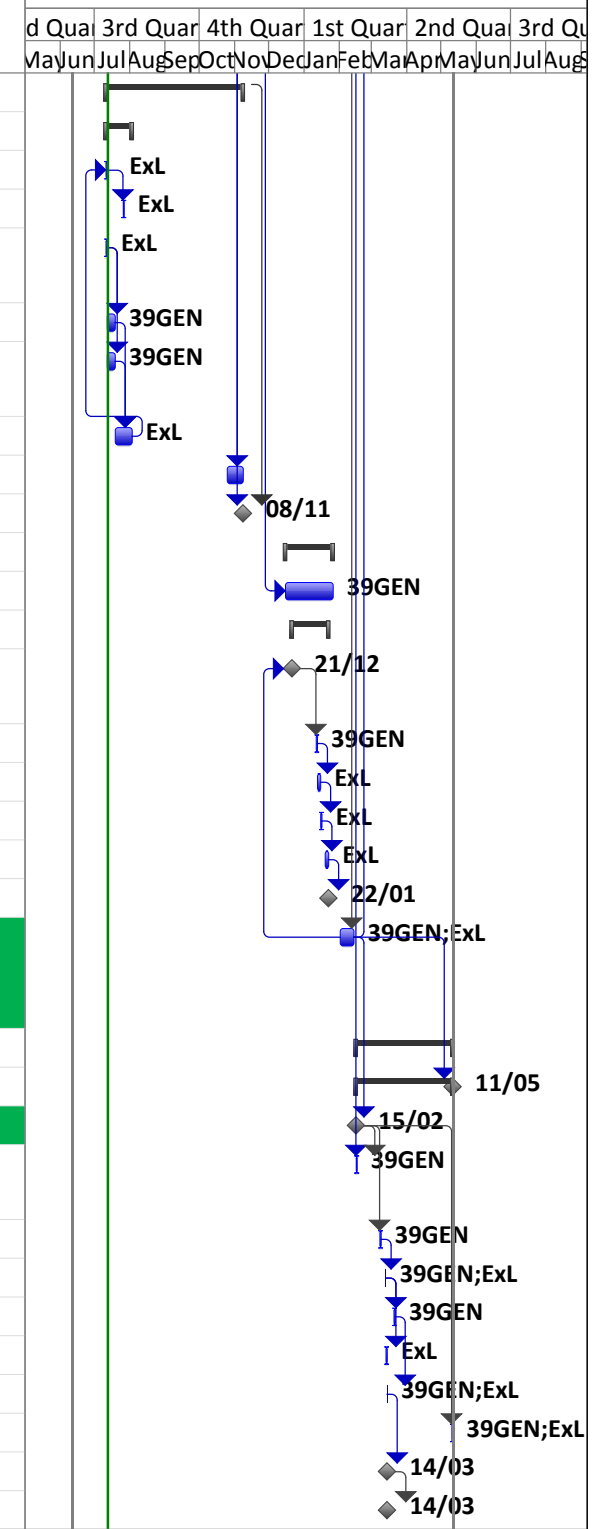
Project: Alma & Primo Implement Date: Thu 13/07/17	Task		Project Summary		Inactive Milestone		Manual Summary Rollup		Deadline	
	Split		External Tasks		Inactive Summary		Manual Summary		Progress	
	Milestone		External Milestone		Manual Task		Start-only		Manual Progress	
	Summary		Inactive Task		Duration-only		Finish-only			

ID	% Complete	Task Name	Duration	Start	Finish	Predecessors	Successors	Resource Names																	
									d	3rd Quar	4th Quar	1st Quar	2nd Quar	3rd Quar											
									May	Jun	Jul	Aug	Sep	Oct	Nov	Dec	Jan	Feb	Mar	Apr	May	Jun	Jul	Aug	
109	0%	Alma Analytics Training	0,5 days	Wed 18/10/17	Wed 18/10/17	108		39GEN																	
110	0%	Customer Functional and Data Review & Testing	72 days	Wed 18/10/17	Fri 26/01/18																				
111	0%	Testing Migrated Data	3 mons	Wed 18/10/17	Wed 10/01/18	106	113SS;112	39GEN																	
112	0%	Migration refinements according to feedback (to be applied in cutover load)	5 days	Wed 10/01/18	Wed 17/01/18	111		ExL																	
113	0%	Testing Alma functionality per customer workflows	3 mons	Wed 18/10/17	Wed 10/01/18	111SS	114FF+2 days;116	39GEN																	
114	0%	Alma Workshop (on-site)	2 days	Wed 10/01/18	Fri 12/01/18	113FF+2 days	115;159FS-1 mon	39GEN;ExL																	
115	0%	Configuration adjustments	2 wks	Fri 12/01/18	Fri 26/01/18	114	116	ExL																	
116	0%	Customer Functional and Data Review & Testing Completed	0 days	Fri 26/01/18	Fri 26/01/18	115;113	167FS+4 days																		
117	0%	Primo implementation (Total Care)	110,2 days	Tue 11/07/17	Mon 11/12/17																				
118	0%	Primo Slot Allocation and Initial Setup	18 days	Tue 11/07/17	Thu 03/08/17																				
119	0%	Allocate and set up -Slot on Primo Implementation Environment	10 days	Tue 11/07/17	Mon 24/07/17		120	ExL																	
120	0%	Initial Configuration	3 days	Tue 25/07/17	Thu 27/07/17	119	121;123FS+6 wks;1	ExL																	
121	0%	Primo Central - Initial Registration	5 days	Fri 28/07/17	Thu 03/08/17	120		ExL																	
122	0%	Delivery of customer input	11,63 days	Fri 08/09/17	Mon 25/09/17																				
123	0%	Primo Analysis Session remote	0,5 days	Fri 08/09/17	Fri 08/09/17	120FS+6 wks	124	39GEN;ExL																	
124	0%	Send Primo Workbooks and URL for Primo Central Resource Activation	1 hr	Fri 08/09/17	Fri 08/09/17	123	125;126	ExL																	
125	0%	Complete and Deliver Primo Workbooks (Library Management/System Configuration and Back End Configuration)	11 days	Fri 08/09/17	Mon 25/09/17	124	128	39GEN																	
126	0%	Activate Primo Central Resources	5 days	Fri 08/09/17	Fri 15/09/17	120;124	135FS+9,8 days	39GEN																	
127	0%	Primo Configuration	13 days	Mon 25/09/17	Wed 11/10/17																				
128	0%	Configure Primo According to Workbooks	10 days	Mon 25/09/17	Fri 06/10/17	125	129;132	ExL																	
129	0%	Set u-resolver base URL	3 days	Fri 06/10/17	Wed 11/10/17	128	133	ExL																	
130	0%	Alma Data - publishing and loading	7 days	Fri 10/11/17	Tue 21/11/17																				
131	0%	Publish Alma data	2 days	Fri 10/11/17	Tue 14/11/17	96FS+4 wks	132	ExL																	
132	0%	Load Alma data into Primo and setup Alma holding files link in My Profile	2 days	Tue 14/11/17	Thu 16/11/17	128;131	133	ExL																	
133	0%	Internal testing and adjustments	3 days	Thu 16/11/17	Tue 21/11/17	129;132	140	ExL																	
134	0%	Front End Setup	9,5 days	Fri 29/09/17	Wed 11/10/17																				
135	0%	Primo Presentation to prepare Front End customization (remote)	0,5 days	Fri 29/09/17	Fri 29/09/17	126FS+9,8 days	136;137	39GEN;ExL																	
136	0%	Complete and Deliver Primo Front End Configuration Workbook	6 days	Fri 29/09/17	Fri 06/10/17	135	138	39GEN																	
137	0%	Adjust css, html for Static Tiles	6 days	Fri 29/09/17	Fri 06/10/17	135	140	39GEN																	
138	0%	Front End Setup	3 days	Fri 06/10/17	Wed 11/10/17	136	140	ExL																	
139	0%	Deliver Feedback to EXL	14 days	Tue 21/11/17	Mon 11/12/17																				
140	0%	Check Primo and Provide Feedback	10 days	Tue 21/11/17	Tue 05/12/17	137;138;133	141SS	39GEN																	
141	0%	Support During Customer Checks	5 days	Tue 21/11/17	Tue 28/11/17	140SS	142	ExL																	
142	0%	Final Tuning of Configuration Based on Customer Feedback	8 days	Tue 28/11/17	Fri 08/12/17	141	143	ExL																	
143	0%	Acceptance of Primo Configuration	0 days	Fri 08/12/17	Fri 08/12/17	142	144	39GEN																	
144	0%	Synchronization with test and production system	1 day	Fri 08/12/17	Mon 11/12/17	143	145	ExL																	
145	0%	Primo Implementation Work Completed	0 days	Mon 11/12/17	Mon 11/12/17	144																			
146	0%	Authentication	87,2 days	Tue 11/07/17	Wed 08/11/17																				
147	0%	Authentication Against Alma (if required)	5 days	Wed 18/10/17	Wed 25/10/17	103	156;157	39GEN;ExL																	



Project: Alma & Primo Implement Date: Thu 13/07/17	Task		Project Summary		Inactive Milestone		Manual Summary Rollup		Deadline	
	Split		External Tasks		Inactive Summary		Manual Summary		Progress	
	Milestone		External Milestone		Manual Task		Start-only		Manual Progress	
	Summary		Inactive Task		Duration-only		Finish-only			

ID	% Complete	Task Name	Duration	Start	Finish	Predecessors	Successors	Resource Names	Timeline																	
									d	Quar	3rd	Quar	4th	Quar	1st	Quar	2nd	Quar	3rd	Quar						
									May	Jun	Jul	Aug	Sep	Oct	Nov	Dec	Jan	Feb	Mar	Apr	May	Jun	Jul	Aug		
148	0%	Primo authentication	87,2 days	Tue 11/07/17	Wed 08/11/17		157																			
149	0%	Authentication Using PDS	17 days	Tue 11/07/17	Wed 02/08/17																					
150	0%	Create SF Case for Shibboleth Server if Required	1 day	Tue 11/07/17	Tue 11/07/17	155FS-4 wks	151FS+2 wks?	ExL																		
151	0%	Shibboleth Server Created	1 day	Wed 26/07/17	Wed 26/07/17	150FS+2 wks?		ExL																		
152	0%	Provide Authentication Questionnaire and Technical requirements	1 day	Tue 11/07/17	Tue 11/07/17		153;154	ExL																		
153	0%	Reply filled Authentication Questionnaire	5 days	Wed 12/07/17	Tue 18/07/17	152	155	39GEN																		
154	0%	Open Access to Authentication System for Authentication Request	5 days	Wed 12/07/17	Tue 18/07/17	152	155	39GEN																		
155	0%	PDS Setup	11 days	Wed 19/07/17	Wed 02/08/17	153;154	150FS-4 wks	ExL																		
156	0%	Authentication Against Primo	10 days	Wed 25/10/17	Wed 08/11/17	147																				
157	0%	Authentication Completed	0 days	Wed 08/11/17	Wed 08/11/17	147;148																				
158	0%	Customer Staff Training	30 days	Fri 15/12/17	Fri 26/01/18																					
159	0%	Customer Staff Training	30 days	Fri 15/12/17	Fri 26/01/18	114FS-1 mon		39GEN																		
160	0%	Cutover Preparation	22 days	Thu 21/12/17	Mon 22/01/18																					
161	0%	Provide Getting ready for Alma Cutover document and Alma Go-Live Readiness checklist	0 days	Thu 21/12/17	Thu 21/12/17	167SS-6 wks?	162FS+3 wks	ExL																		
162	0%	Complete and return Alma Go-Live Readiness Checklist	1 day	Thu 11/01/18	Fri 12/01/18	161FS+3 wks	163	39GEN																		
163	0%	Prepare detailed cutover plan based on cutover template	1 day	Fri 12/01/18	Mon 15/01/18	162	164	ExL																		
164	0%	Distribute detailed cutover plan to customer and internally	1 day	Mon 15/01/18	Tue 16/01/18	163	165FS+3 days	ExL																		
165	0%	Adjust cutover plan based on customer and internal feedback	1 day	Fri 19/01/18	Mon 22/01/18	164FS+3 days	166	ExL																		
166	0%	Cutover Plan Finalized	0 days	Mon 22/01/18	Mon 22/01/18	165																				
167	0%	Cutover (Cutover steps are tracked in Project-specific Cutover Plan, not in Project Plan)	8 days	Thu 01/02/18	Tue 13/02/18	116FS+4 days	169;68FF-2,6 mons;161SS-6 wks?;170FS+2	39GEN;ExL																		
168	0%	Phase III - Deploy	61 days	Thu 15/02/18	Fri 11/05/18																					
169	0%	GO LIVE (Alma and Primo)	61 days	Thu 15/02/18	Fri 11/05/18	167																				
170	0%	GO LIVE (Alma and Primo)	0 days	Thu 15/02/18	Thu 15/02/18	167FS+2 days	172FS+3 wks?;171																			
171	0%	Followup with source link resolver providers and ensure they have updated with new Alma URL	1 day	Thu 15/02/18	Fri 16/02/18	170;104		39GEN																		
172	0%	Complete initial post go-live Alma health-check list	1 day	Thu 08/03/18	Fri 09/03/18	170FS+3 wks?	173FS+2 days	39GEN																		
173	0%	Post Go-Live Consultancy (discretionary remote call)	0,5 days	Tue 13/03/18	Tue 13/03/18	172FS+2 days	174FS+1 wk?;175	39GEN;ExL																		
174	0%	Complete final post go-live Alma health-check list	1 day	Tue 20/03/18	Wed 21/03/18	173FS+1 wk?	176FS-5 days	39GEN																		
175	0%	Send Alma / Primo Implementation Survey	1 day	Tue 13/03/18	Wed 14/03/18	173		ExL																		
176	0%	Switch to Alma Support (Remote Call)	1 hr	Wed 14/03/18	Wed 14/03/18	174FS-5 days	178	39GEN;ExL																		
177	0%	Request previous ExL systems are de-comissioned	1 day	Thu 10/05/18	Fri 11/05/18	170FS+3 mons?		39GEN;ExL																		
178	0%	Deploy Phase completed	0 days	Wed 14/03/18	Wed 14/03/18	176	179																			
179	0%	Project Completed	0 days	Wed 14/03/18	Wed 14/03/18	178																				



Project: Alma & Primo Implement Date: Thu 13/07/17	Task		Project Summary		Inactive Milestone		Manual Summary Rollup		Deadline	
	Split		External Tasks		Inactive Summary		Manual Summary		Progress	
	Milestone		External Milestone		Manual Task		Start-only		Manual Progress	
	Summary		Inactive Task		Duration-only		Finish-only			